

Liquid-cooled Dispenser

Quick Installation Guide

SC500E-L1



- This document will be updated from time to time due to updates of the product or other reasons. Under no circumstances should this document be taken as a substitute for the user manual and safety instructions provided on the product.
- Before performing any operation, please read through carefully the user manual and relevant standards and specifications. You can find the related documents by visiting <http://support.sungrowpower.com/> or by scanning the QR code provided on the device or the back cover of this Quick Installation Guide.
- Operations on the device must only be performed by qualified technical persons. The qualified technical persons must have received specialized training, read through the user manual to gain a good understanding of the relevant safe operation instructions, and be familiar with the applicable local standards and safety code for electrical systems.
- Before installation, check the delivered items for quantity according to the packing list and see if the delivery matches the order you placed. Meanwhile, inspect the items for any visible damage. Contact the transport service provider or SUNGROW in case of anything abnormal.
- The cables used must all be intact and well-insulated. Be sure to use insulated tools and wear personal protective equipment properly during operation.
- Violation of any of the above requirements may result in personal injury or device damage.

Safety Disclaimer

SUNGROW shall not be held liable for any personal injury or device damage arising from device-related operations that are not carried out in compliance with the requirements specified in this document or the user manual.

DANGER

- Do not touch the contact inside the charging connector when it carries voltage.
- Electrical connection must be performed by qualified personnel who wear personal protective equipment.
- All electrical connections must be done in compliance with the applicable local and national electrical standards.
- Be sure to use specialized insulated tools when performing electrical connection.
- Do not use the charging dispenser when its charging connector or cable is defective, frayed, cracked, or in case of exposed wires. Contact SUNGROW if you have found any of the above issues.
- When the device is running, do not touch any of its live parts or remove any of its parts or components; otherwise, it may lead to electrical shocks.

WARNING

- All safety signs and warning labels and the nameplate on the device must be clearly visible and cannot be removed or covered.

CAUTION

Burn hazard!

- During the charging process, do not touch any hot part of the device (e.g., air outlet for heat dissipation); otherwise, it may cause burns.

NOTICE

- Non-qualified personnel are forbidden from disassembling the device or moving its components.
- Do not install the device in a place with corrosives such as corrosive gas and organic solvent, etc.
- Do not install the device in dusty and smoky environments.

Signs on the Product



Disconnect the device from all external power sources before maintenance!



Danger to life due to high voltages!
Installation and operation must only be performed by qualified technical persons.



Protective grounding (PE) terminal.



Do not touch live parts until 10 minutes after disconnection from the sources.



UKCA mark of conformity.



TÜV mark of conformity.



Do not dispose of the device together with household waste.



Read the user manual before performing any operation on the device.



24 0122
TXXXX-DE

PTB mark of conformity.



CE mark of conformity.

EU Declaration of Conformity



within the scope of the EU directives:

- Low Voltage Directive 2014/35/EU (LVD)
- Electromagnetic compatibility Directive 2014/30/EU (EMC)
- Radio Equipment Directive 2014/53/EU (RED)
- The restriction of the use of certain hazardous substances (RoHS) in electrical and electronic equipment Directive 2011/65/EU and Commission Delegated Directive (EU)2015/863

The manufacturer Sungrow Power Supply Co., Ltd., China hereby confirms that the product SC500E-L1 complies with the essential requirements and other relevant provisions of Directives 2014/35/EU, 2014/30/EU, 2014/53/EU, 2011/65/EU and (EU)2015/863.

The full EU Declaration of Conformity can be found at <https://support.sungrowpower.com/productDetail?directoryId=1801087709387079681>.

Radio data

	RFID
Model	MT628V115
Power Supply	5V
Frequency range	13.56MHz
Maximum transmitting power	<5 dBμA/m
Max. Antenna gain	0dBi

*Technical parameters listed above apply to EU countries only.

Manufacturer :

Sungrow Power Supply Co., Ltd.











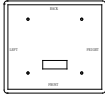
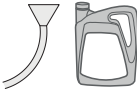

No 1699. Xiyou Road,Hefei 230088.P.R.China

For EU only

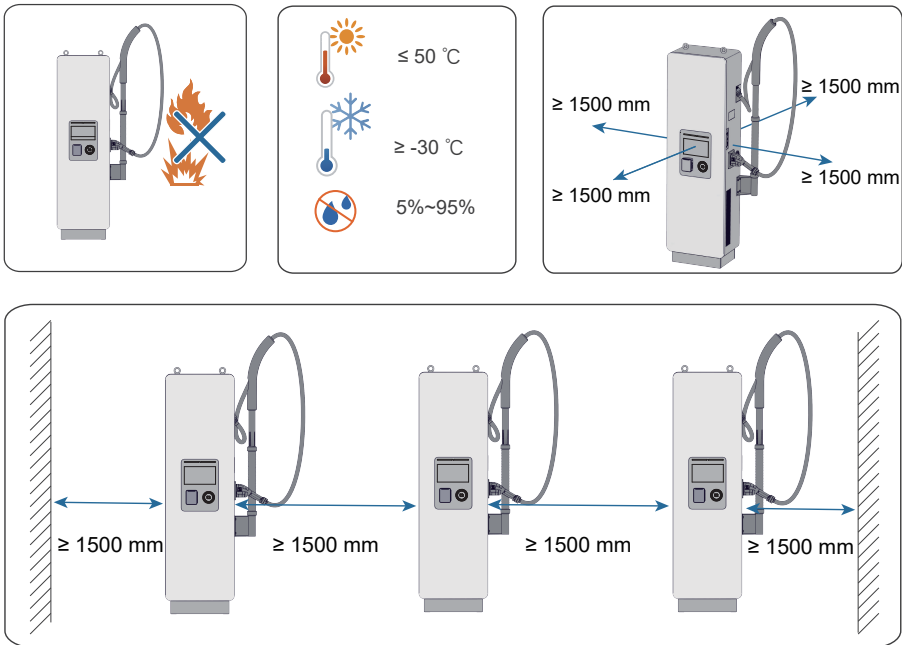
EU/EEA Importer: Sungrow Deutschland GmbH

Balanstraße 59, 81541 München, Germany

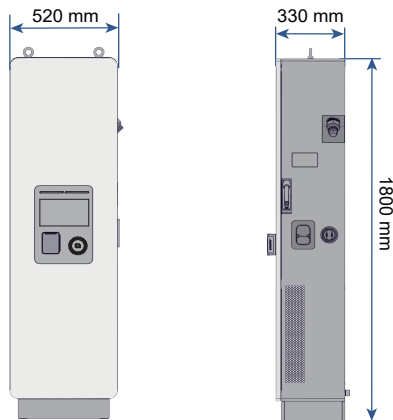
Scope of Delivery

 Charging Dispenser (x1)	 M12X100 expansion bolt (x4)	 Door key (x2)	 RFID card (x2)	 Fireproof mud (x1)
	 M10x25 bolt assembly (x6)	 M10 hex flange nut (x4)	 M8x16 bolt assembly (x3)	 M5x12 (x4)
 Waterproof plug (x3)	 Mounting template (x1)	 Funnel (x1) Coolant (1x4L)	 Documents	

Installation Site Selection



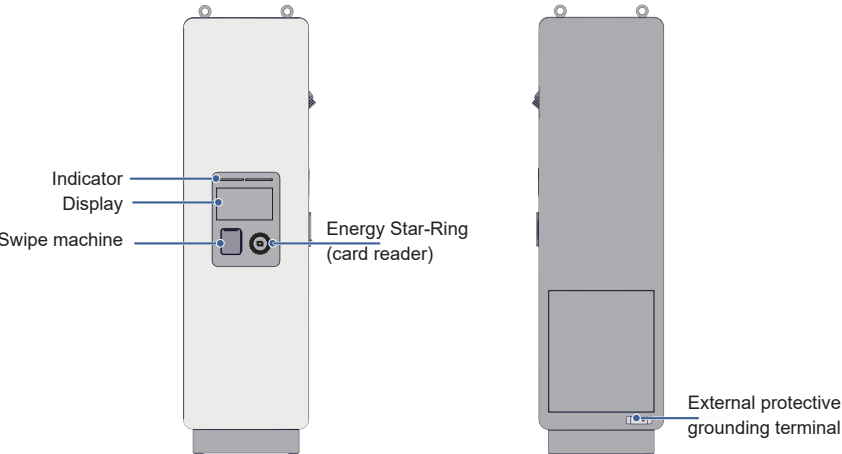
Dimensions



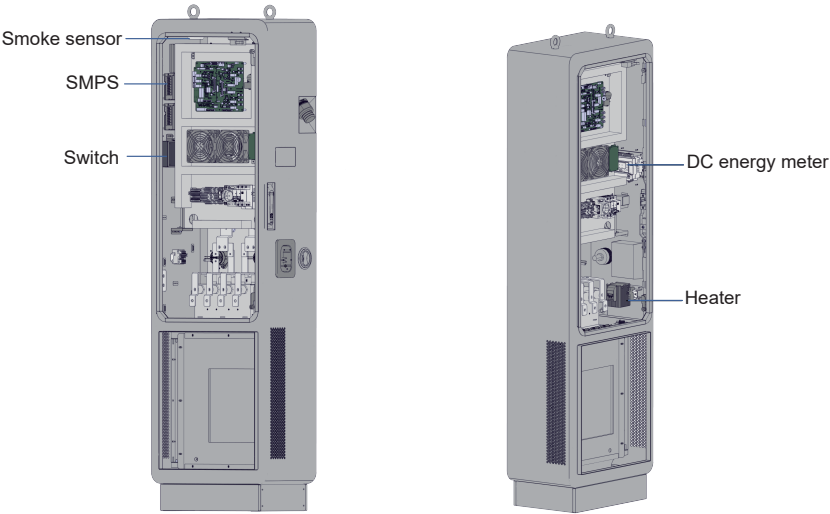
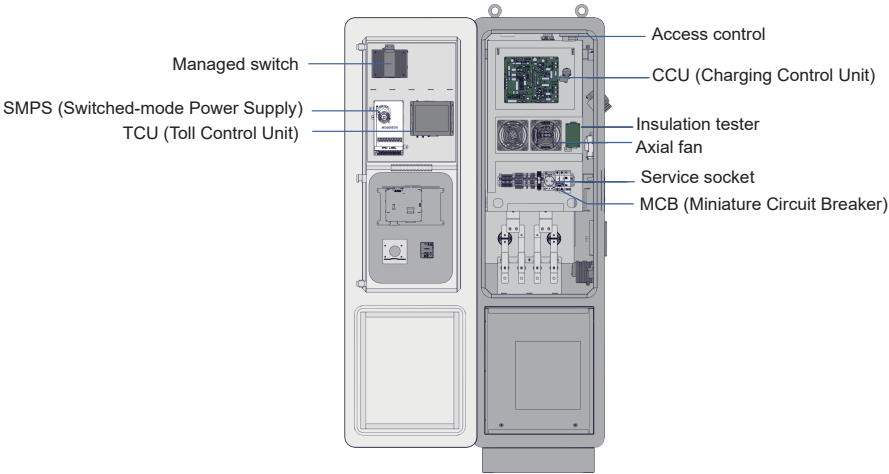
Please note that due to variations in production batches, the actual product may differ slightly in appearance and size. Please refer to the product itself for the most accurate details.

Product Overview

- External Design

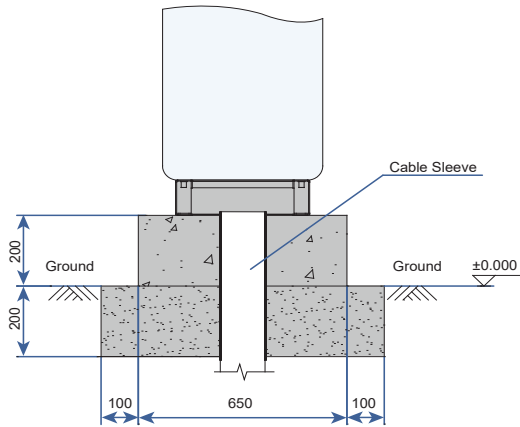


● Internal Structure

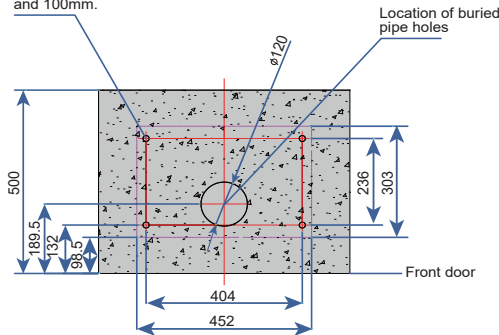


Foundation Building

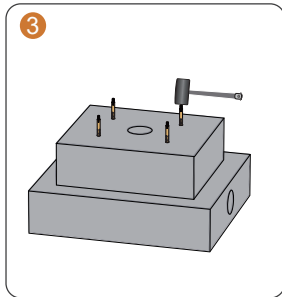
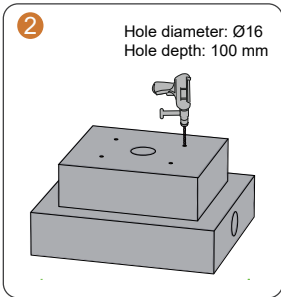
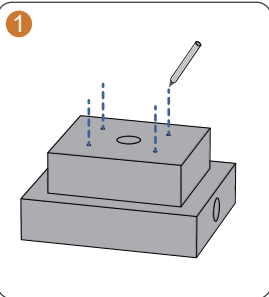
Foundation Dimensions (mm)

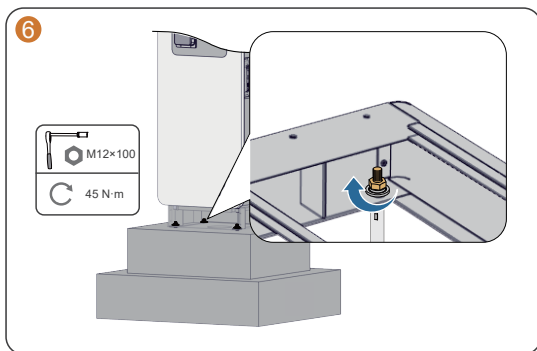
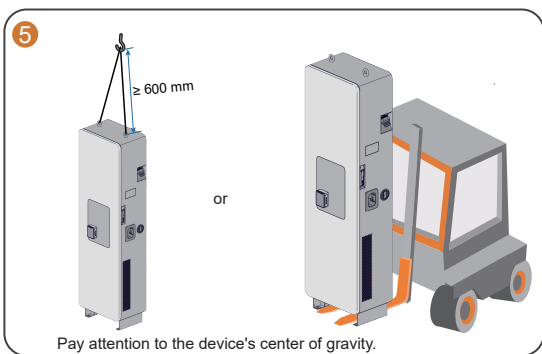
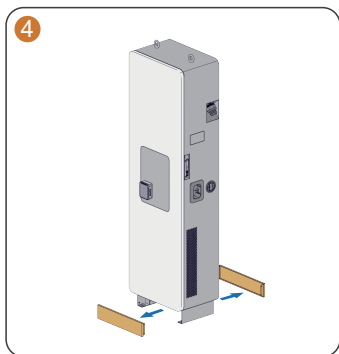


Equipped with 4*M12*100mm expansion bolts.
The recommended diameter and depth for the bottom hole are 12mm and 100mm.

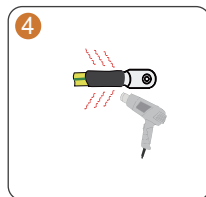
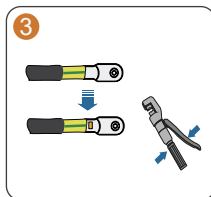
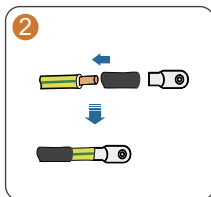
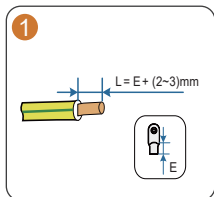


Dispenser Mounting

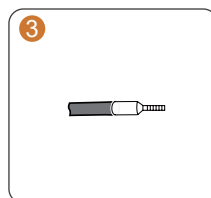
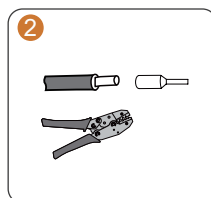
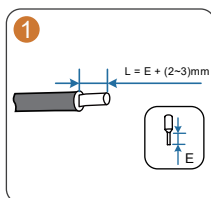




OT/DT/SC Terminal Crimping

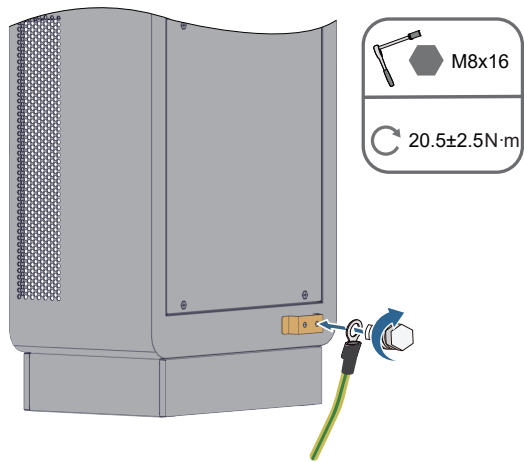


Tubular Terminal Crimping



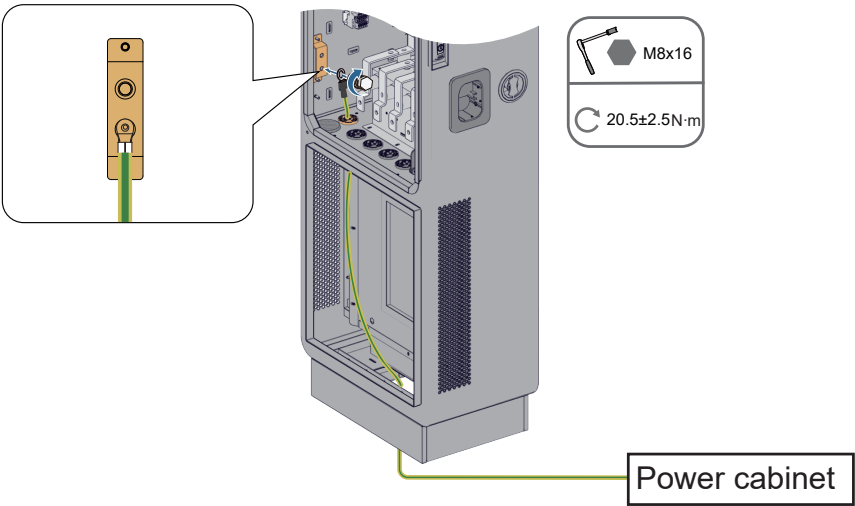
External Ground Connection

Copper cable: 70 mm² Aluminum cable: 95 mm²



Common Ground Connection (with Power Cabinet)

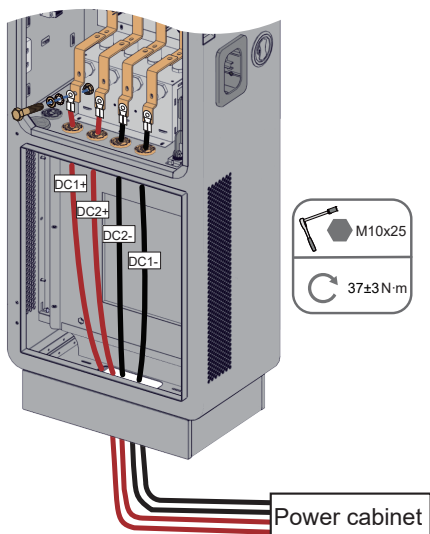
Copper cable: 70 mm² Aluminum cable: 95 mm²



DC Cable Connection

Specification of DC cables between power cabinet and dispenser

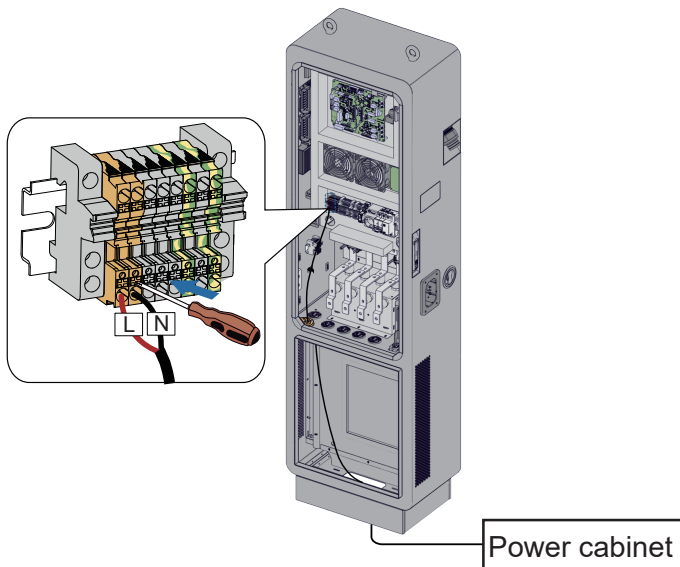
Withstand voltage: ≥ 1 kV Copper cable: 120 mm² Aluminum cable: 240 mm²



Power Cable Connection

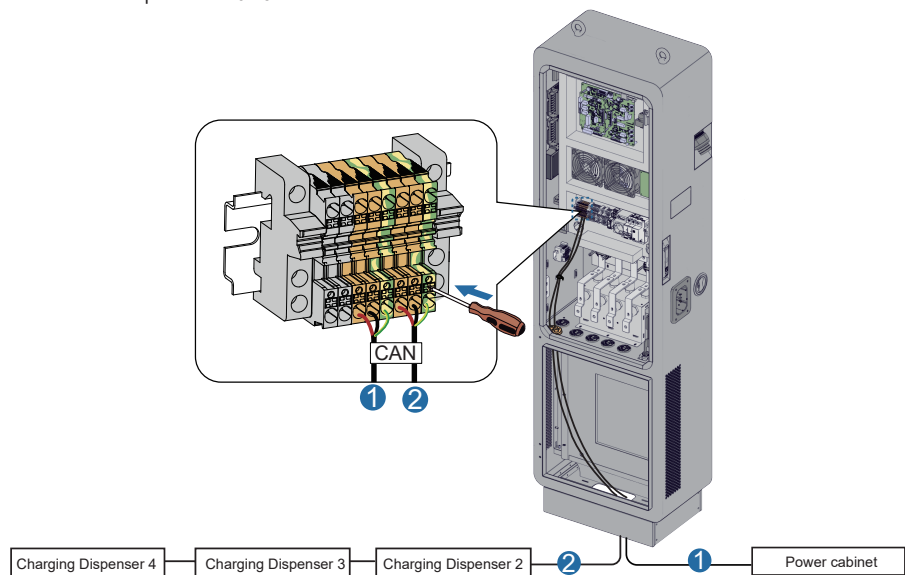
Specification of power cables between power cabinet and dispenser

Two-core power cable: 2.5 mm²

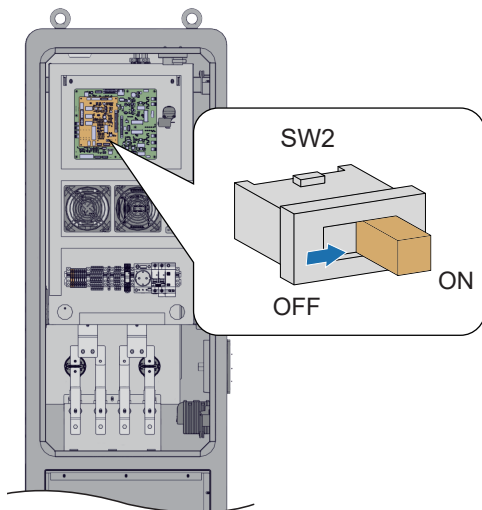


CAN Cable Connection

Shielded twisted-pair cable: 0.75 mm²

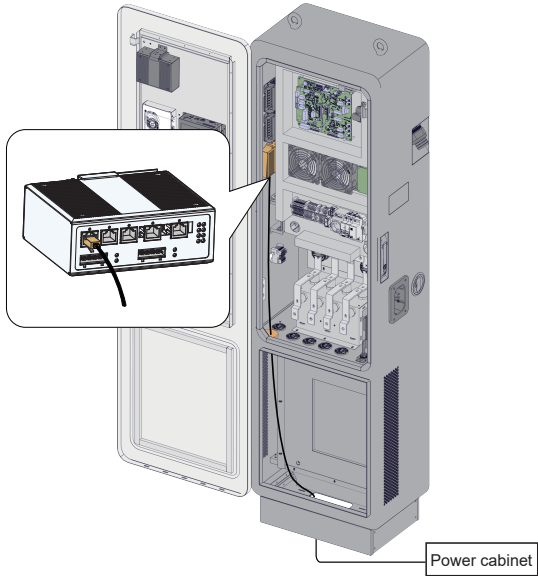


If the dispenser is at the end point of CAN communication, set the DIP switch on the CAN communication board to "ON".



Ethernet Cable Connection

8-core Cat5e or Cat6 Ethernet cable is recommended.



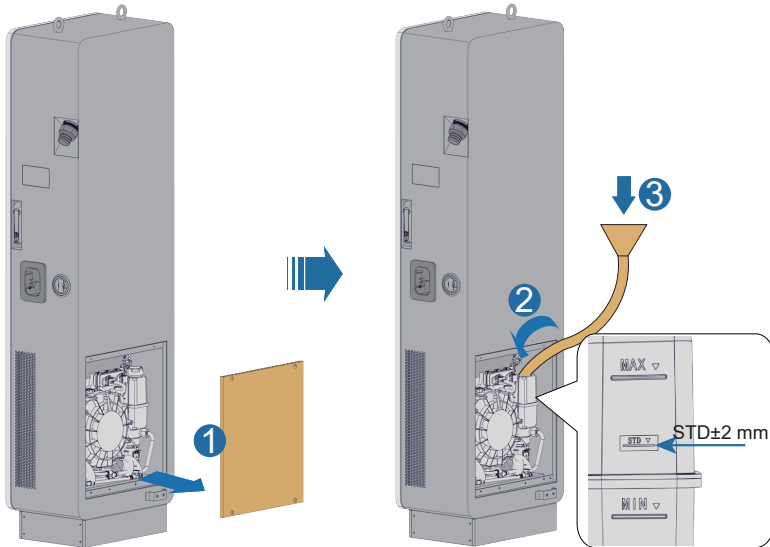
Indicator

Indicator	Indicator Status	Dispenser Status	Remarks
Charging connector indicators	Steady green	The connector is in standby state.	Normal.
	Breathing blue	The connector is being used for charging.	Normal.
	Steady blue	Charging is complete.	Normal.
	Steady red	Fault.	Abnormal.
Energy Star-Ring (charging indicator)	Blinking blue	Waiting for the user to swipe a card.	Normal.
	Steady blue	The dispenser is normal.	Normal.
	Steady red	There is a fault in the dispenser.	Abnormal.

Add Coolant

Add coolant to the liquid cooling system before the device is used for the first time. The coolant level may drop and needs to be topped up as the dispenser operates. Ensure the coolant level is maintained at (STD ± 2) mm after topping up.

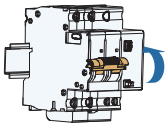
Use the Shell E4 charging coolant provided in the shipment to ensure compatibility with the cooling system.



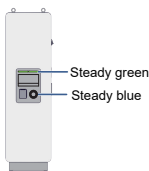
Power on & Commissioning

Prerequisite: The DC power cabinet has been powered on and is operating properly.

1 Switch on the AC MCB.



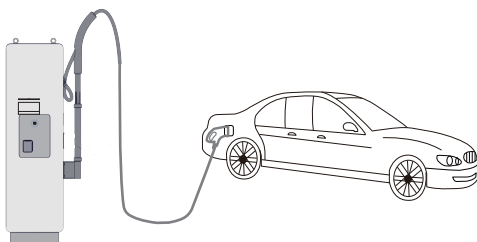
2



3



4





More information in the QR code or
at <http://support.sungrowpower.com/>

SUNGROW

Sungrow Power Supply Co., Ltd.

www.sungrowpower.com



M 0 H 0 0 0 4 6 0 0 - 6

QIEN M0H00046